

STOPAQ®

sealant
systems

2100 AQUASTOP

NEN-EN-ISO 9001

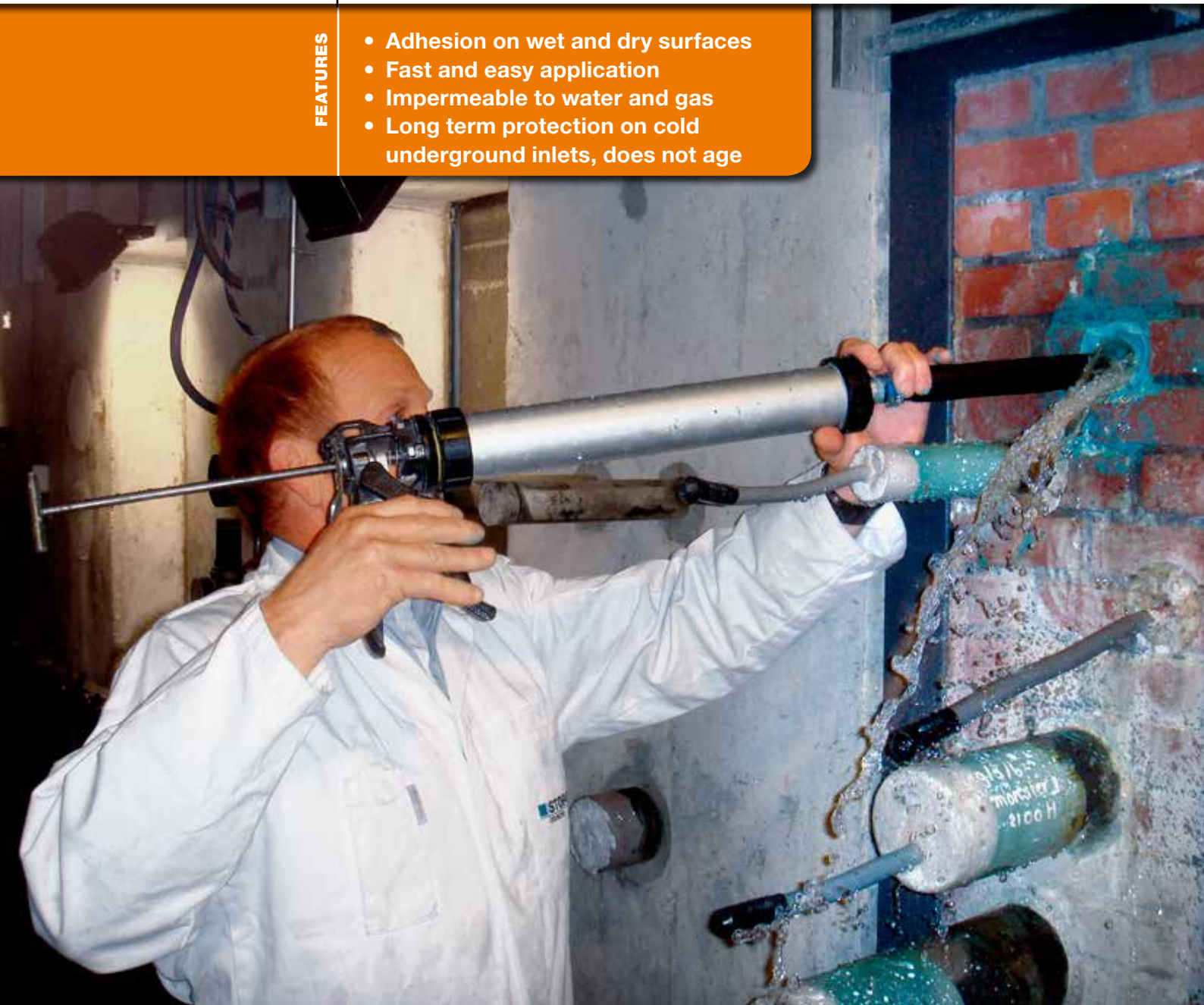


Sealing compound

Wall inlets below ground water level
Sealing of running water leaks
Wall penetrations inside buildings
Multi pipe and cable inlets

FEATURES

- Adhesion on wet and dry surfaces
- Fast and easy application
- Impermeable to water and gas
- Long term protection on cold underground inlets, does not age

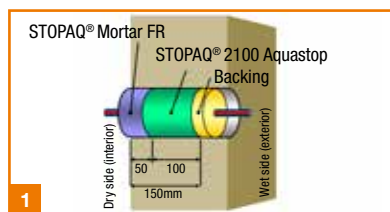


STOPAQ®

Self-healing corrosion prevention & sealant technology
SEALFORLIFE

Manufacturer:
STOPAQ B.V.

Client services and contact:
STOPAQ B.V.
Gasselterstraat 20
9503 JB Stadskanaal
The Netherlands
T +31 (0)599 696 170
T +31 (0)599 696 177
I www.stopaq.com
E info@stopaq.com



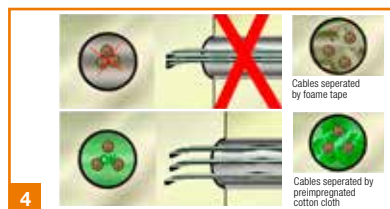
STOPAQ® 2100 AQUASTOP WATERPLUG SYSTEM:
Backing: **Suitable barrier material**
STOPAQ® 2100 Aquastop (100mm)
STOPAQ® Mortar (50mm)



Prior to application, preheat the cartridges up to 30°C/86°F.



Duct to be cleaned using a brush and cleaning pad. Cleaning with water afterwards is optional, STOPAQ® 2100 Aquastop adheres to wet and dry surfaces. Adhesion can be improved when cables and duct are pre-applied with STOPAQ® 2100 Aquastop.



Use foam tape or cotton cloth as suitable barrier and to separate the cables from each other.



Make sure that the barrier is applied 150mm inside the duct.



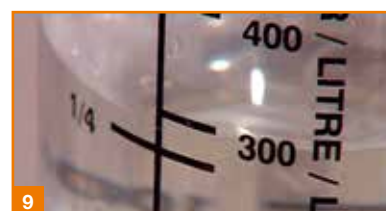
Lift the cables and apply STOPAQ® 2100 Aquastop with an appropriate application gun around the cables. Use the flexible nozzle to fill 100mm of the duct without air enclosures. Apply from the rear of the duct to the front.



Apply STOPAQ® 2100 Aquastop up to 50mm from the front of the duct.



For flame retardant application use STOPAQ® Mortar FR. For application in wet environment e.g. water basins use STOPAQ® Mortar WR. Only apply mortar on the basement side of the duct.



Clean the remaining 50mm of the duct prior application of mortar. Mix the required amount of mortar with water until it becomes a mouldable mass.



To check for appropriate malleability, the mortar should be moulded to a ball shape without falling apart.



Apply mortar in the remaining 50mm of the duct. Start at the bottom between the cables.



Smoothen the surface of the mortar by using a putty knife and some water.

Compound suited for sealing of wall, pipe or cable inlets and hollow spaces, against gases, moisture, standing water and running groundwater leaks.

FEATURES

- Requires minimal surface preparation
- Adhesion on wet and dry surfaces
- Fast and easy to apply
- Can resist up to 0,3 bar of ground water pressure
- Impermeable to water and gas
- 2100 Aquastop Non Toxic applicator and environmentally friendly
- Unlimited shelflife

BENEFITS

- The sealing remains flexible
- Does not require special application tools
- No material waste - paste reusable
- Immediate sealing: no curing time needed
- Provides permanent and optimal safety
- Adjusts to movements of pipes and cables and environmentally friendly
- Allows for adding and removing cable penetrations by retrofit application

FOR MORE INFO, CHECK THE PRODUCT DATA SHEET AT WWW.STOPAQ.COM

EUROPE - AUSTRALIA - MIDDLE EAST - INDIA - CHINA - MEXICO - USA - CANADA - RUSSIA

